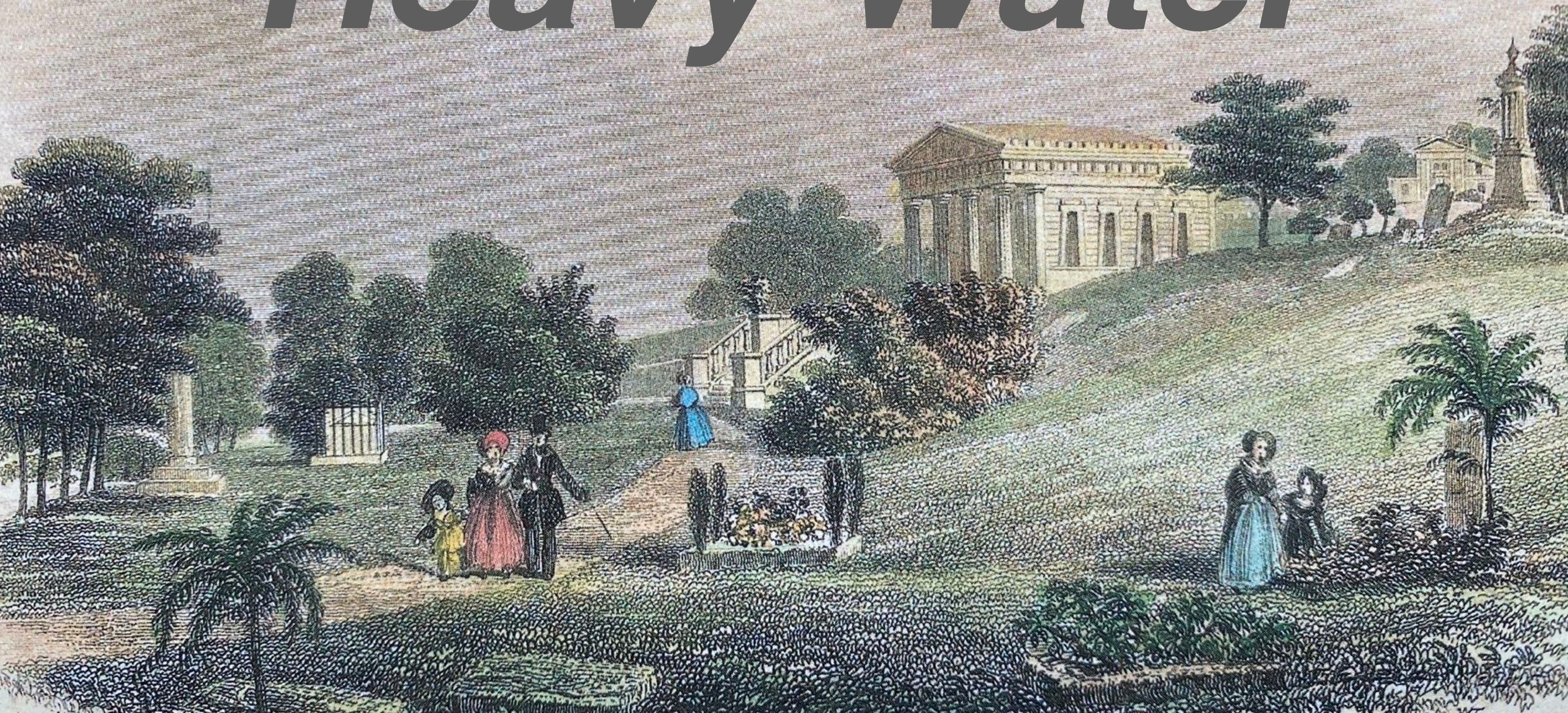
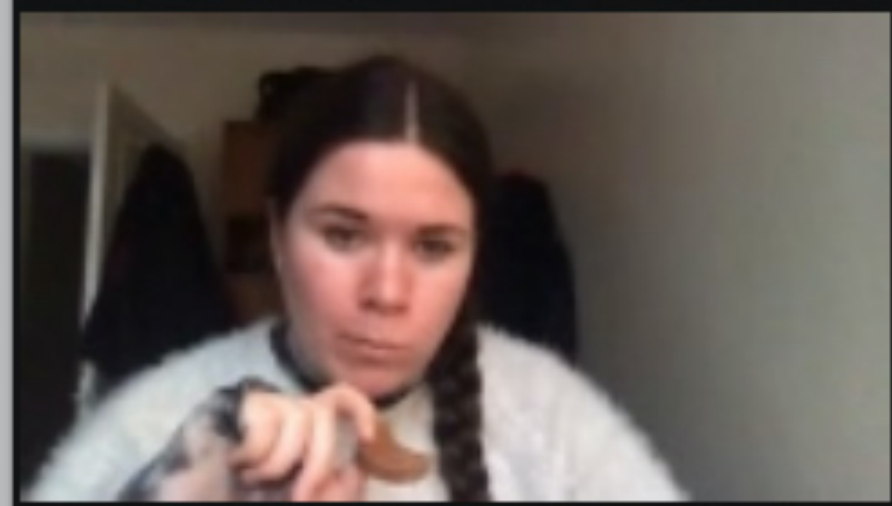
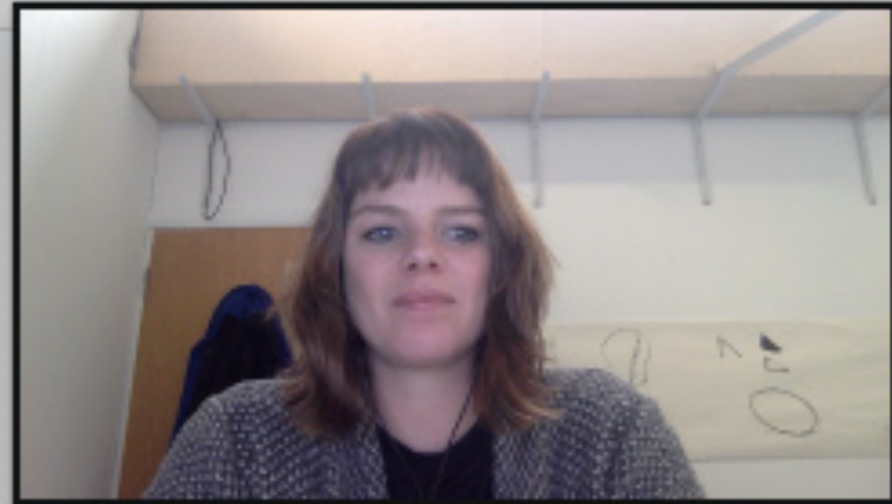
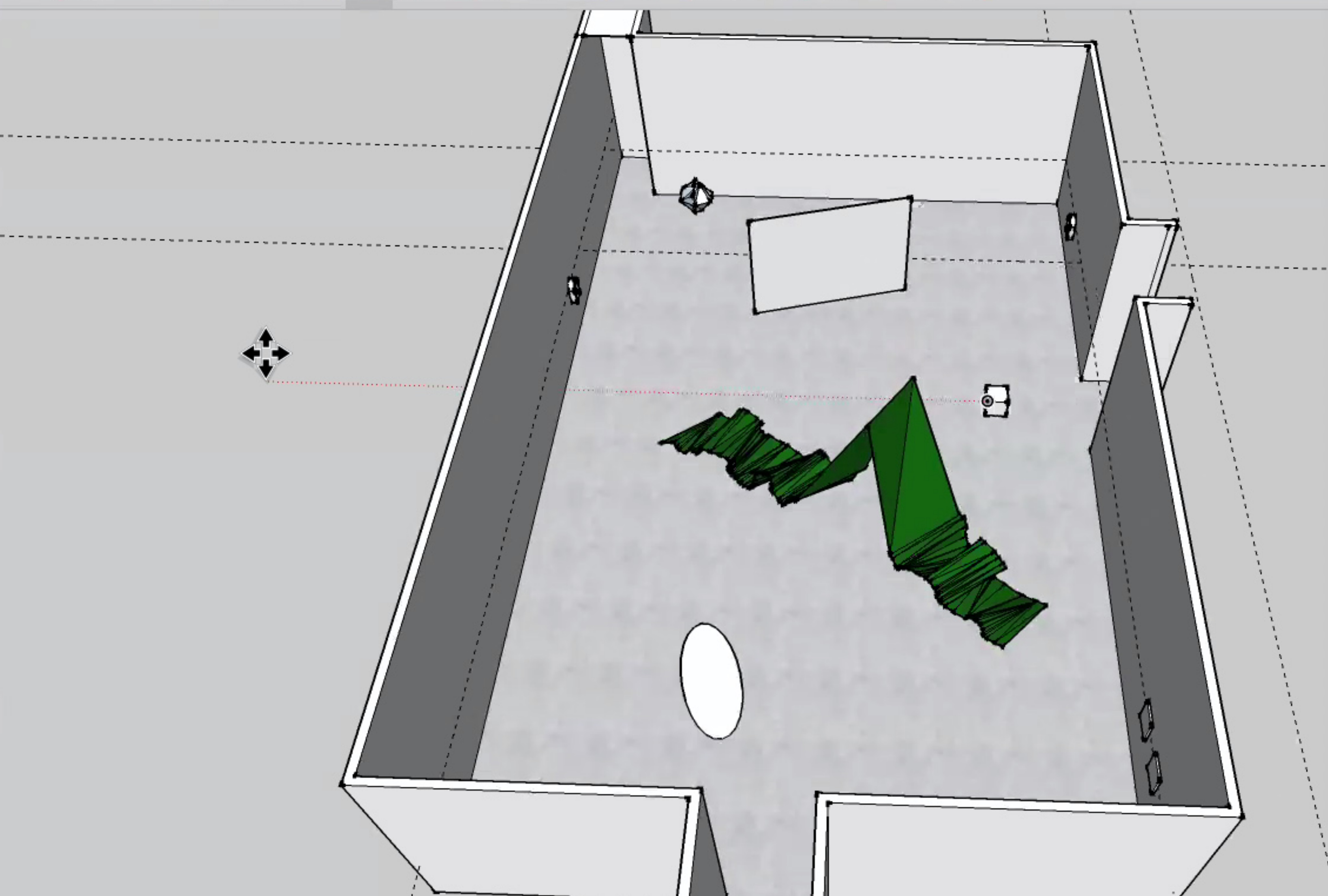


Heavy Water



Heavy water is a form of water with a unique atomic structure, often used for the stabilisation of volatile matter. Its materiality is mystical, permeating organic bodies, calming violent creations, grounding and giving weight to something fluid and intangible.







Small text label on the wall.

Small text label on the wall.



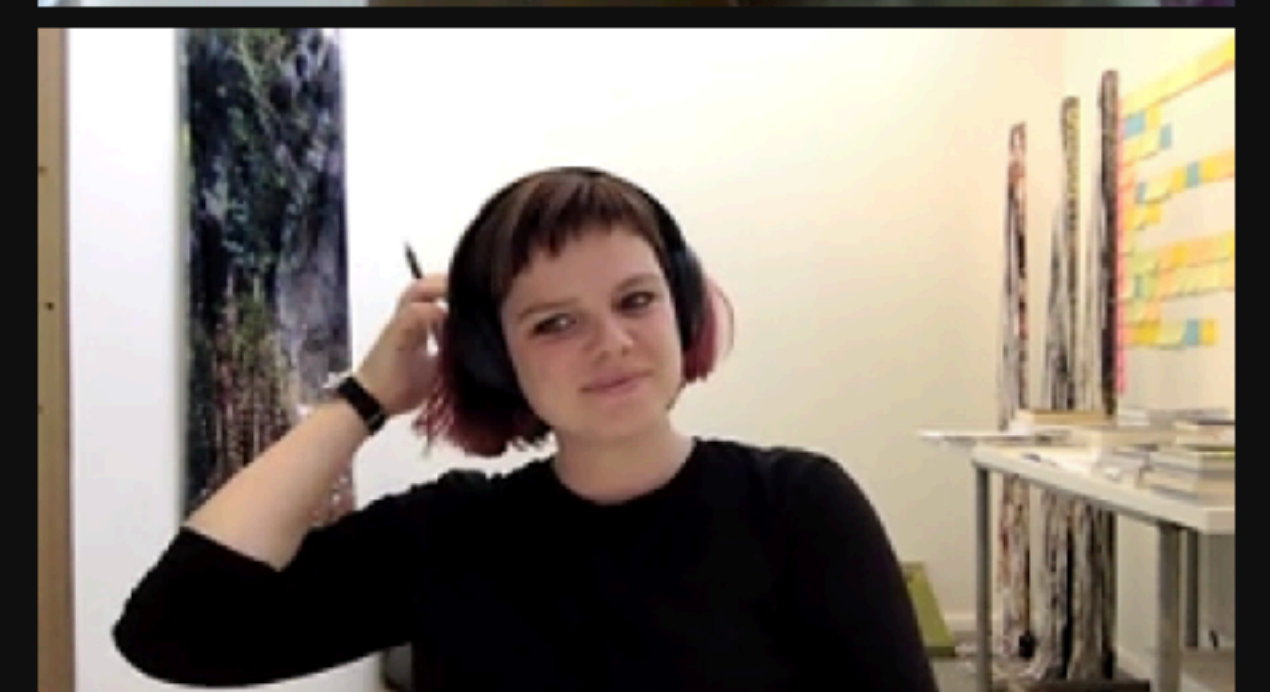
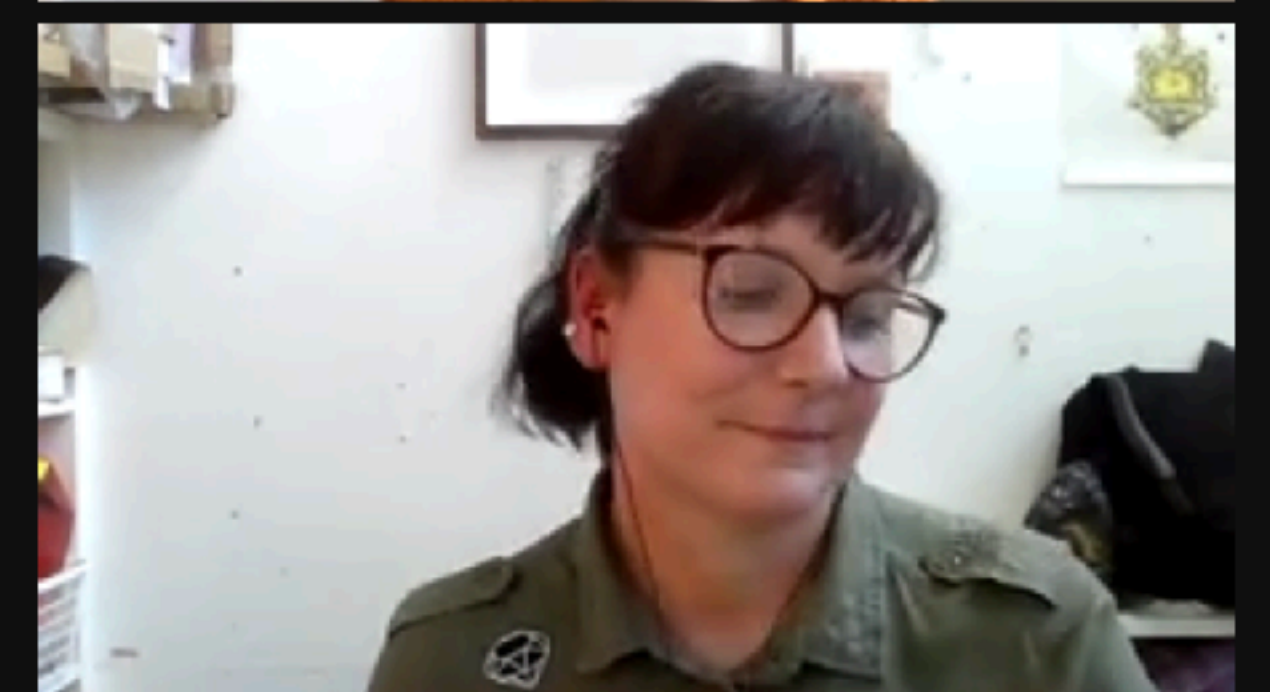
09





Informational sign on the right wall, containing text and possibly a small image or logo.















MAUD HAYA-BAVIERA



List of Works

p.99
Top, middle, bottom: Maud Haya-Baviera, *Things Fall Apart*, digital video (still), 5 min 26 sec, 2020

pp.102-103
Maud Haya-Baviera, *Wish You Were Here*, installation view, Platform 2D, Henry Water, Site Gallery, Sheffield, 2021. Photo: Julia Lister

p.106
Top and bottom: Maud Haya-Baviera, *Wish You Were Here*, digital video (still), 1 min 55 sec, 2020





Heavy Water is an evolving research project that explores ways of reclaiming narratives, in response to remnants associated with human activity. It manifests through research collaborations, exhibitions and public programming.



**YOU DON'T HAVE
TO BE AN
ARTIST.**







FOR HEAVY
WATER EYES









HEAVY WATER

Bloc Studios

53.374405306646565, -1.4712091544094812

HEAVY WATER

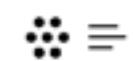
Disused Quarry

53°11'28.4"N 1°35'18.3"W

HEAVY WATER

Welbeck Estate

53°15'32.2"N 1°10'13.3"W



Heavy Water

Samuel Worth Chapel, Cemetery Avenue, S11 8NT

17 August 6.00-8.00pm





Sheffield General Cemetery Trust



INTRODUCTION



Herbal History in the Cemetery Landscape

Sheffield General Cemetery opened in 1836, however, long before there was a Cemetery here this place was a quarry and a much older woodland and countryside site. This trail explores this ancient landscape by thinking about how people might have used the plants in places like this in the past. This trail will show you some of the ancient herbs, plants, and woodland spices which people throughout history used as medicinal and folk remedies. Even during the Victorian period, when many of the people here were buried, homemade, herbal remedies were widespread and popular ways to treat a variety of ailments. Many of the people buried here would have known about the historical properties connected to plants and possible medicinal remedies which go back hundreds and even thousands of years.

All the plants featured on this trail are non-toxic and edible however please do not forage or take home any of these plants. Please leave the landscape as you found it and do not ingest any of the plants on this trail.

The folk remedies and properties associated to plants described in this trail are only displayed here as historical information. Sheffield General Cemetery bears no responsibility for any reactions you may have to plants if you ingest them or any claims for the efficacy of the remedies which are connected to them. Please always consult a doctor before trying out any form of medicinal remedy.

Please also stick to the paths and mown grass areas as graves can be unstable.

All children should be accompanied by an adult. Enjoy exploring Sheffield General Cemetery!



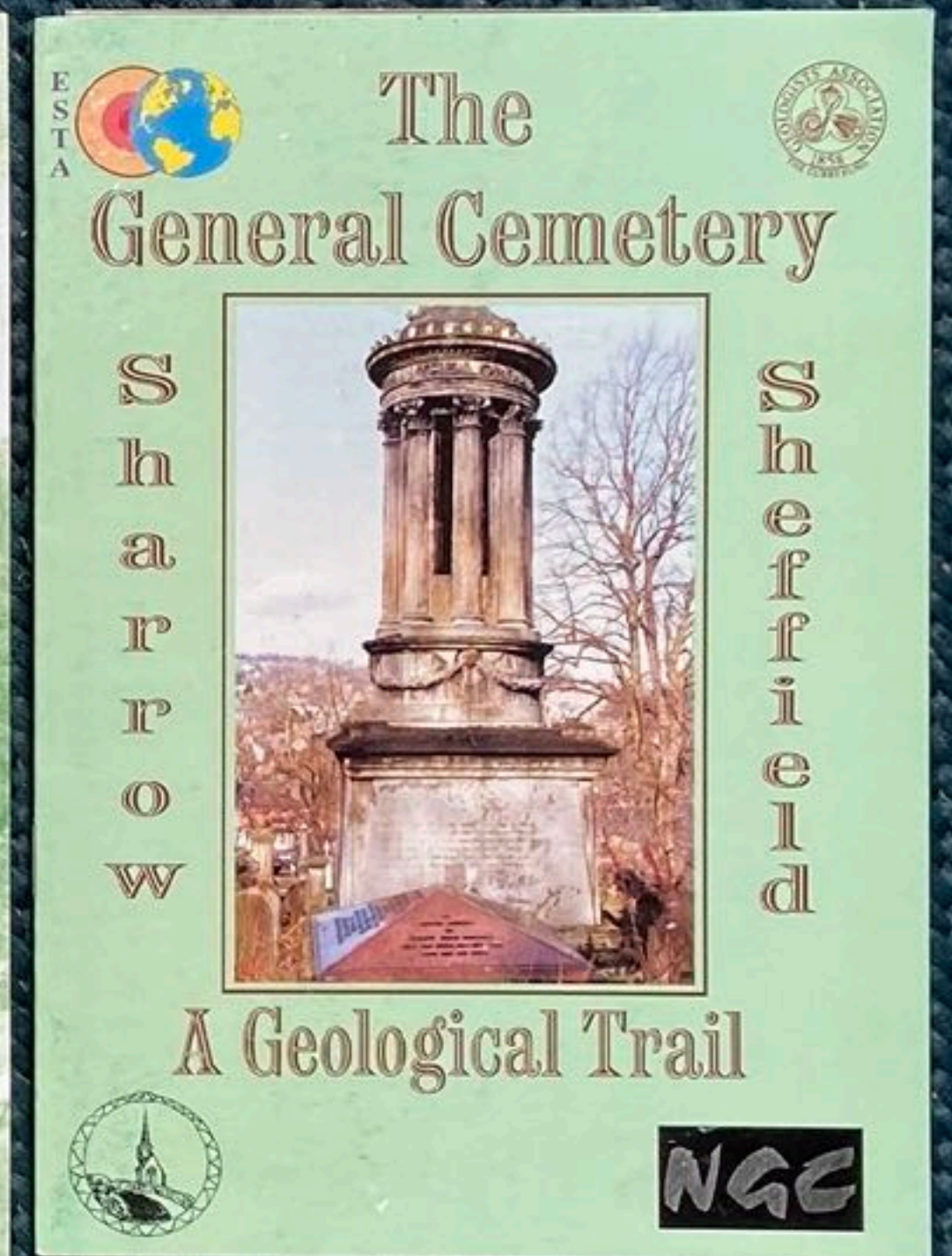
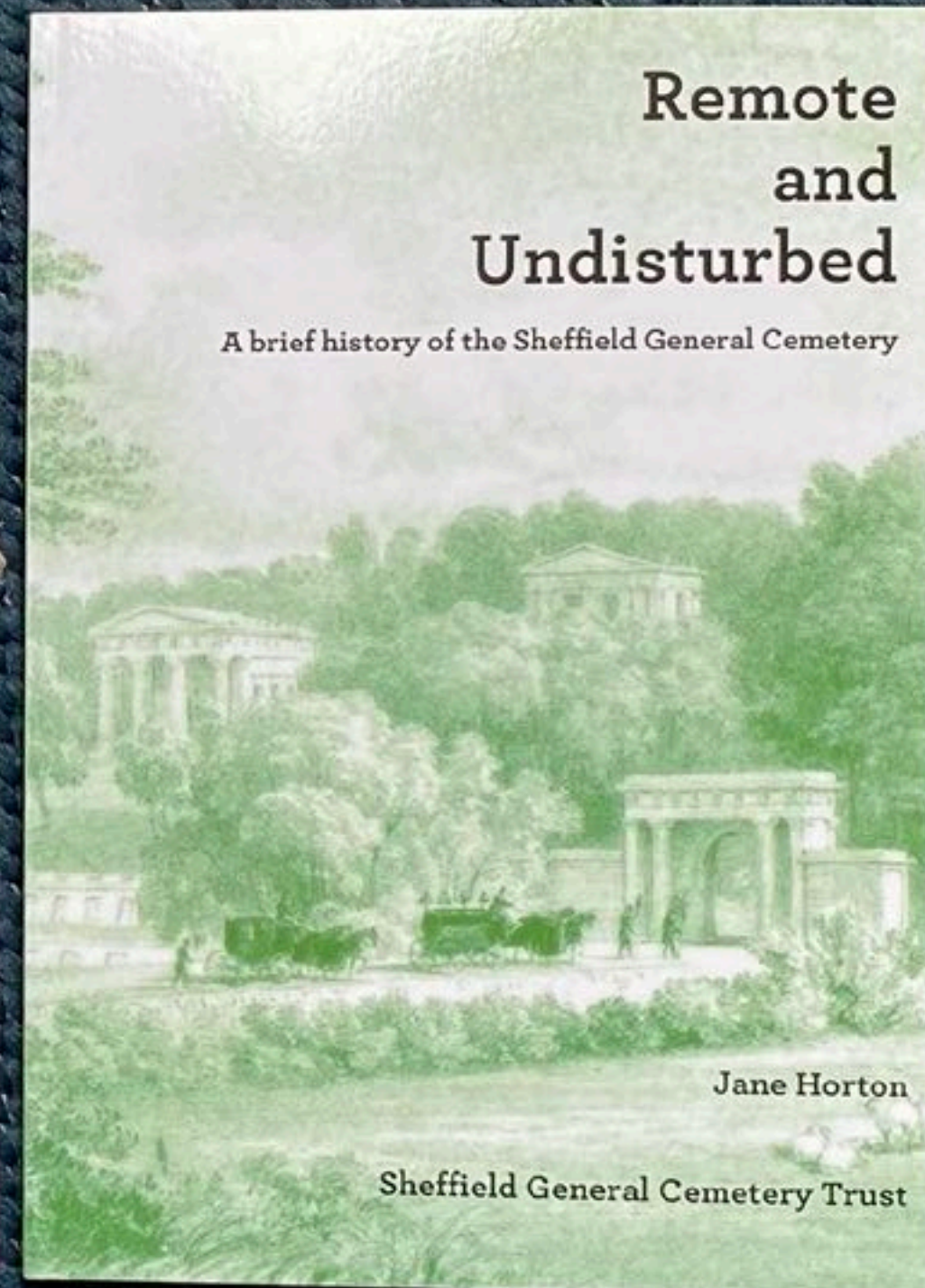
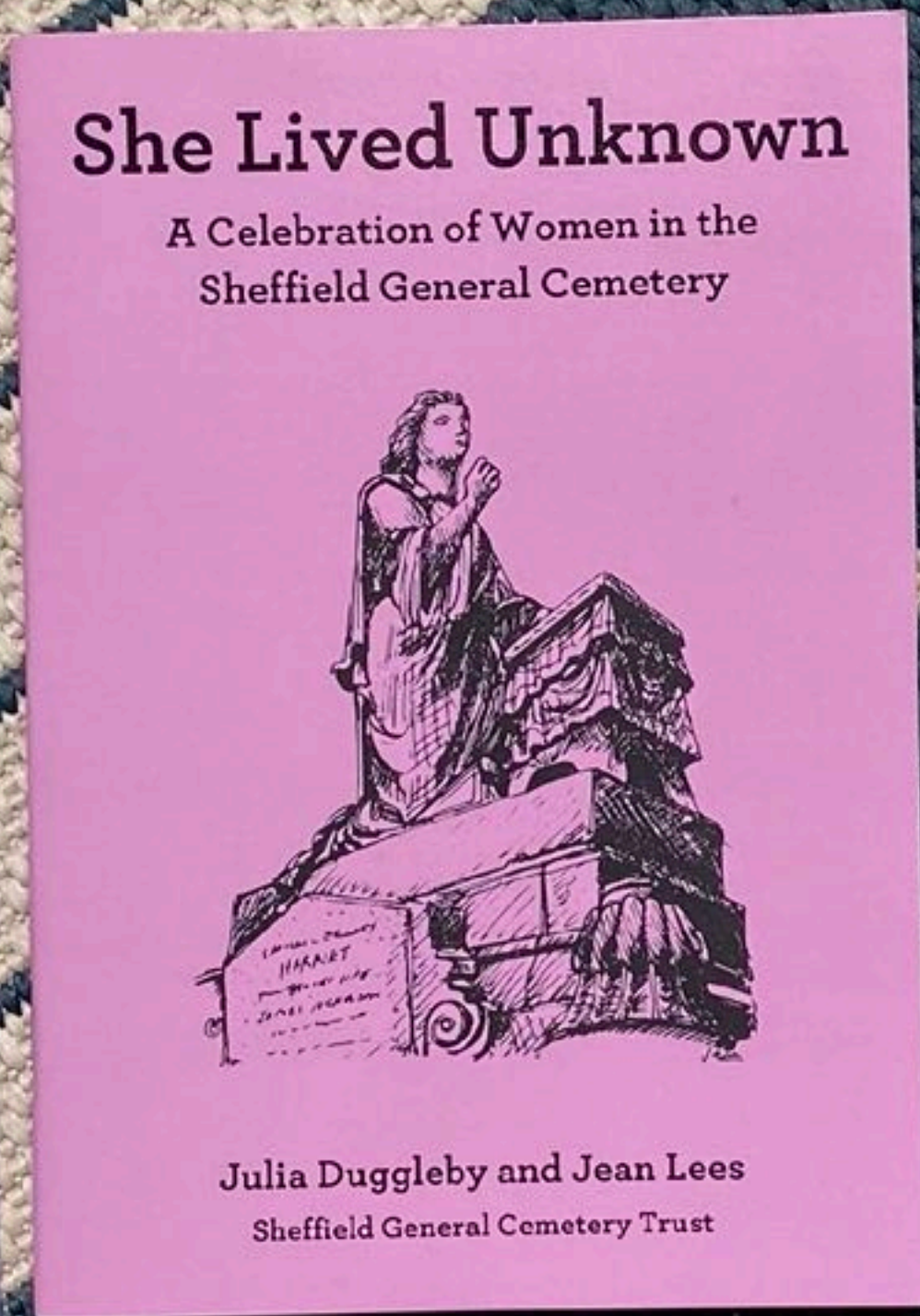
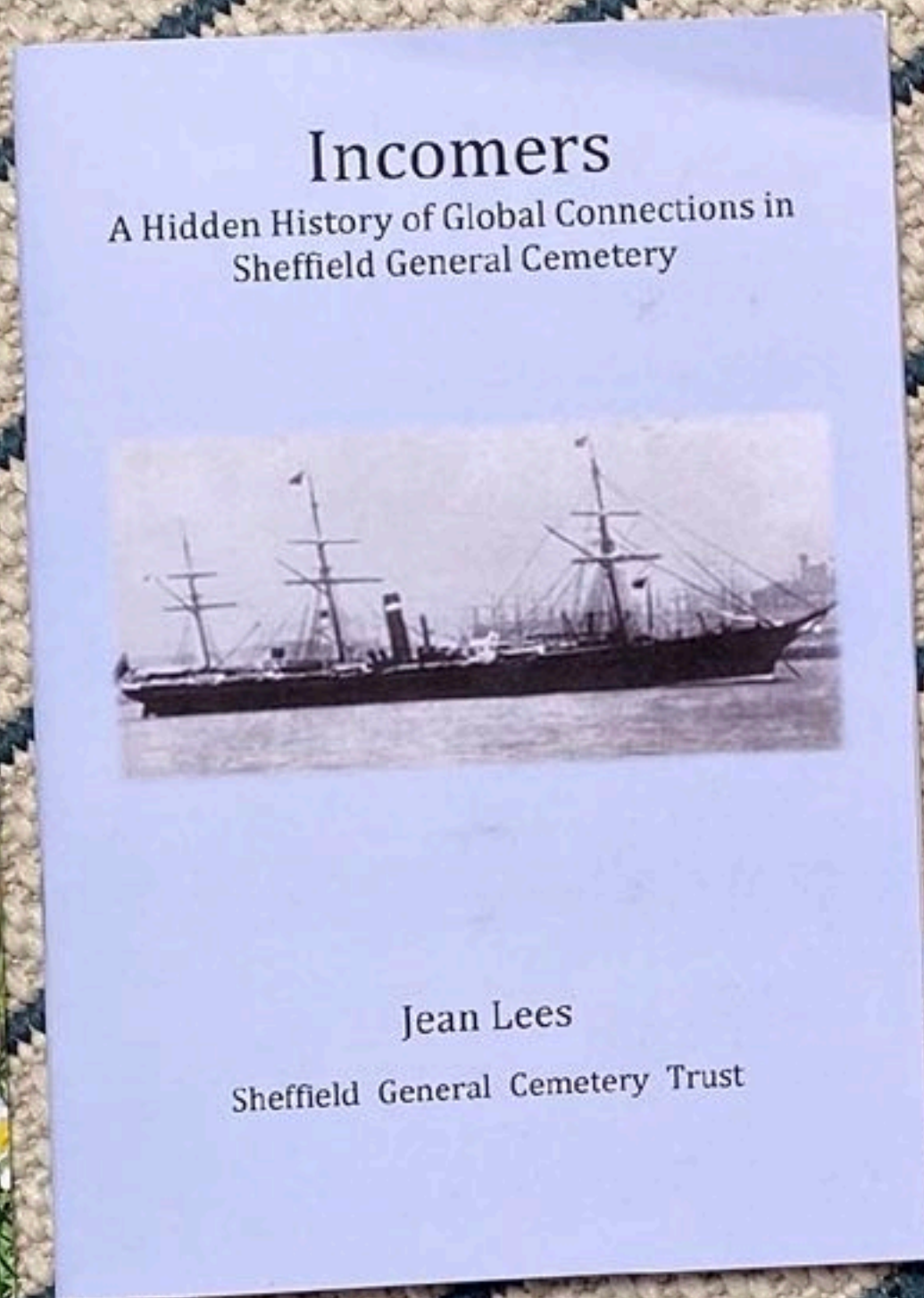
SCAN CODE FOR MORE TRAILS!





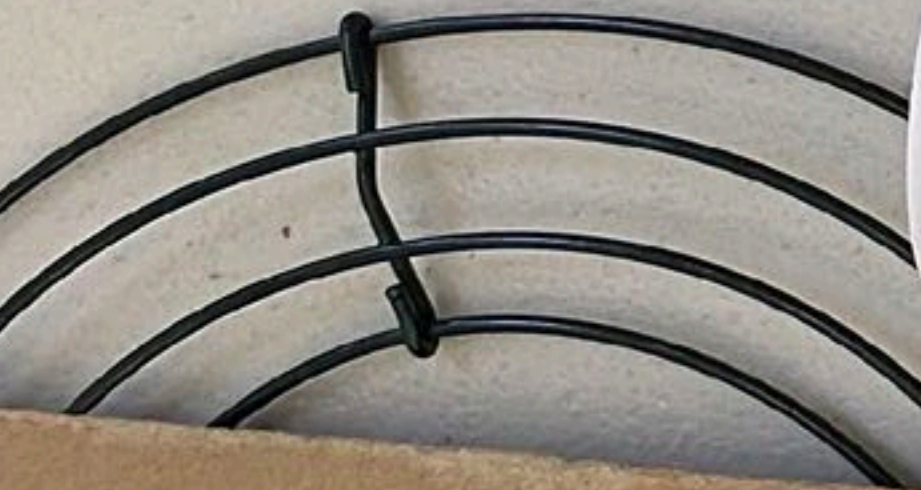
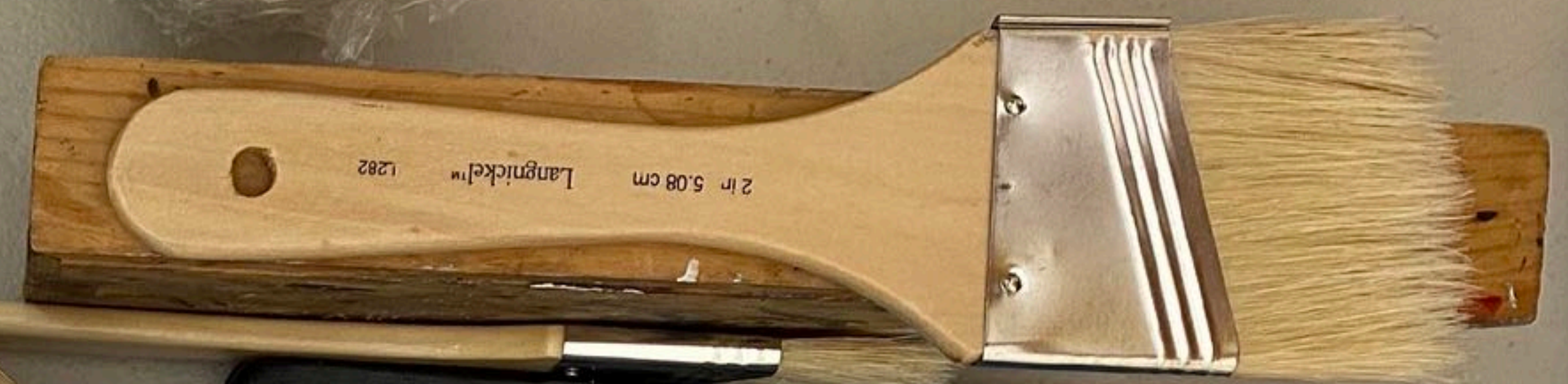


TO THE MEMORY
OF
EMMA: DAUGHTER OF
AND HANNAH
DEPARTED THIS MONTH
AGED THIS MONTH
ALSO OF JOHN
OF THE ABOVE MARRIED
WIFE OF JOHN
ALSO OF JOHN
WIFE OF JOHN
WHO DEPARTED THIS MONTH
AGED THIS MONTH















M SCAFFOLDING
#UPTO THE JOB
01298 27334
www.manorscaffolding.co.uk











Handwritten notes in a notebook, including names like "Alfred" and "John" and dates like "1842".

SACRED
TO THE MEMORY OF
SAMUEL HOLBERRY,
WHO AT THE EARLY AGE OF 27 DIED
IN YORK CASTLE, AFTER SUFFERING
AN IMPRISONMENT OF 2 YEARS AND 3
MONTHS, JUNE 21ST, 1842,
FOR ADVOCATING WHAT TO HIM APPEARED
TO BE THE TRUE INTEREST OF THE PEOPLE OF
ENGLAND.
HE VANISHED IN THE FEVERISH DREAM OF LIFE:
THE RICH AND POOR FIND NO DISTINCTION HERE,
THE GREAT AND LOWLY END THEIR CARE AND STRIFE,
THE WELL BELOVED MAY HAVE AFFECTIONS TEAR,
BUT AT THE LAST, THE OPPRESSOR AND THE SLAVE
SHALL EQUAL STAND BEFORE THE BAR OF GOD,
OF HIM, WHO LIFE, AND BEFORE THE WISE DECREE,
TO ALL THAT THRO' THIS VALE OF TEARS HAVE TROD,
LET NONE THEN MURMUR AGAINST THE CAPTIVE FREE
THAT OPEN'D THE DOOR, AND SET THE WISE DECREE,
ALSO OF SAMUEL JOHN, HIS SON WHO
DIED IN HIS INFANCY.
THIS TABLET WAS ERECTED BY HIS GRIEVED WIDOW

TO THE
EMMA, DAUGHTER
AND HANNA
DEPARTED THIS
AGED
ALSO OF JOHN
OF THE ABOVE
WHO DEPARTED
JANUARY 5TH 1844
ALSO OF ELLEN, DAUGHTER
OF THE ABOVE
WHO DIED JUNE 18
AND 3
ALSO OF THE ABOVE
WHO DIED JULY 30
AND OF THE ABOVE
WHO DIED MAY 30



IN MEMORY OF
THE DEARLY BELIEVED
MARTHA ANN
BORN JULY 1840
DIED MAY 1890
AGE 49 YEARS
ALSO IN MEMORY OF
MARTHA ANN
BORN JULY 1840
DIED MAY 1890
AGE 49 YEARS









THE

OF

OF

THE







Person 1: A man wearing a blue hard hat, a high-visibility yellow vest over a dark blue hoodie, and khaki pants. He is pointing towards the monument with his right hand and holding a clipboard and a hat in his left hand.

Person 2: A woman wearing a blue hard hat, a high-visibility yellow vest over a grey hoodie, and black pants. She is holding a clipboard and looking towards the monument.

Person 3: A woman wearing a blue hard hat, a high-visibility yellow vest over a red jacket, and black pants. She is holding a white tote bag with the text "Liverpool Biennial 2018" and looking towards the monument.

Monument: A tall, dark stone column with a decorative base, standing in a park-like setting with trees and a metal fence in the foreground.

Liverpool Biennial 2018









OF SAMUEL, SON OF THE ABOVE
WHO DIED AUGUST 12TH 1861,

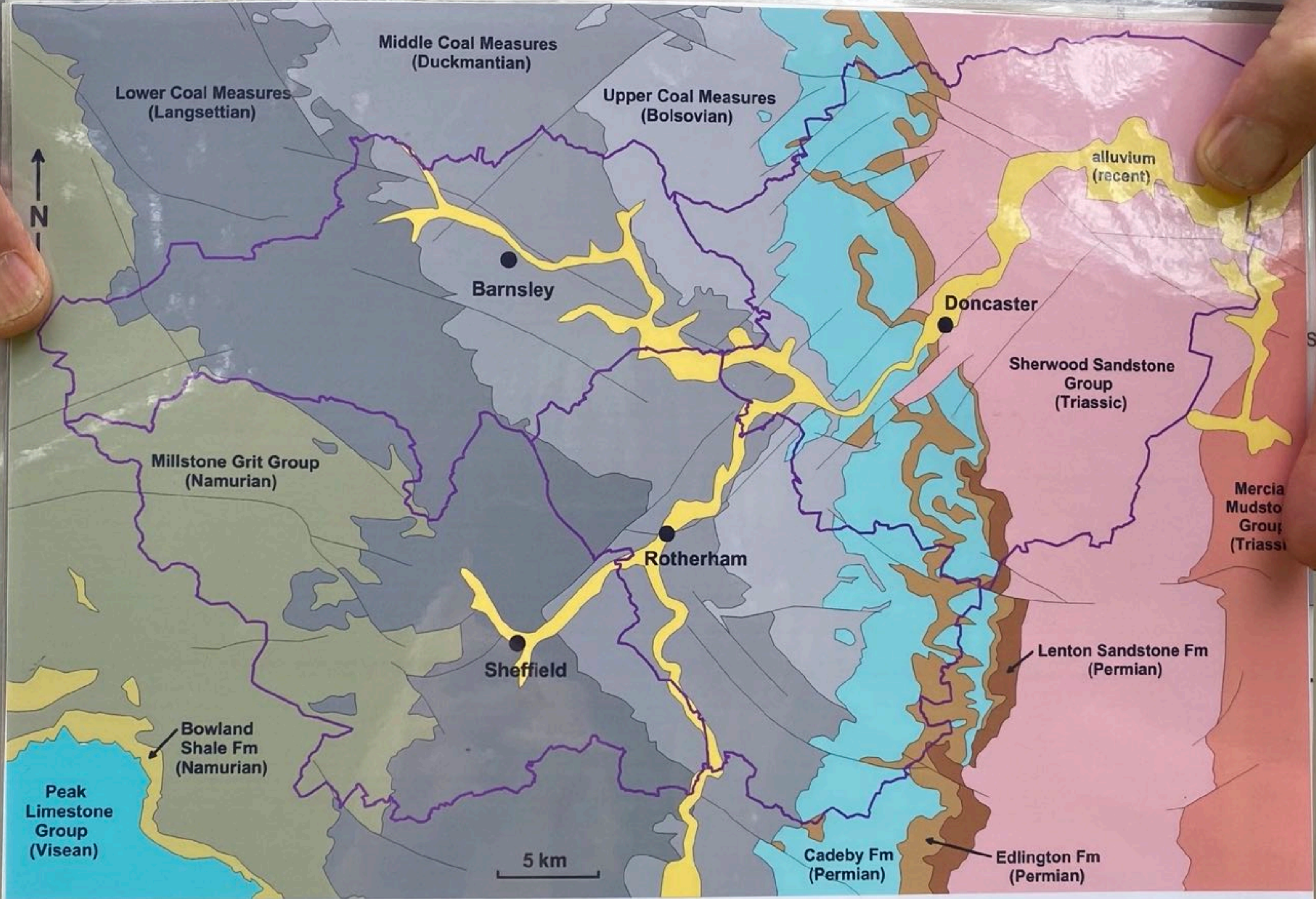
19 YEARS 10 MONTHS AND 16 DA

THE WINTER OF TROUBLE IS PAST,
THE STORM OF AFFLICTION IS OVER,
THE STRUGGLE IS ENDED AT LAST,
AND SORROW AND DEATH ARE NO MORE.

○ MARY ANN, WIFE OF THE ABOVE

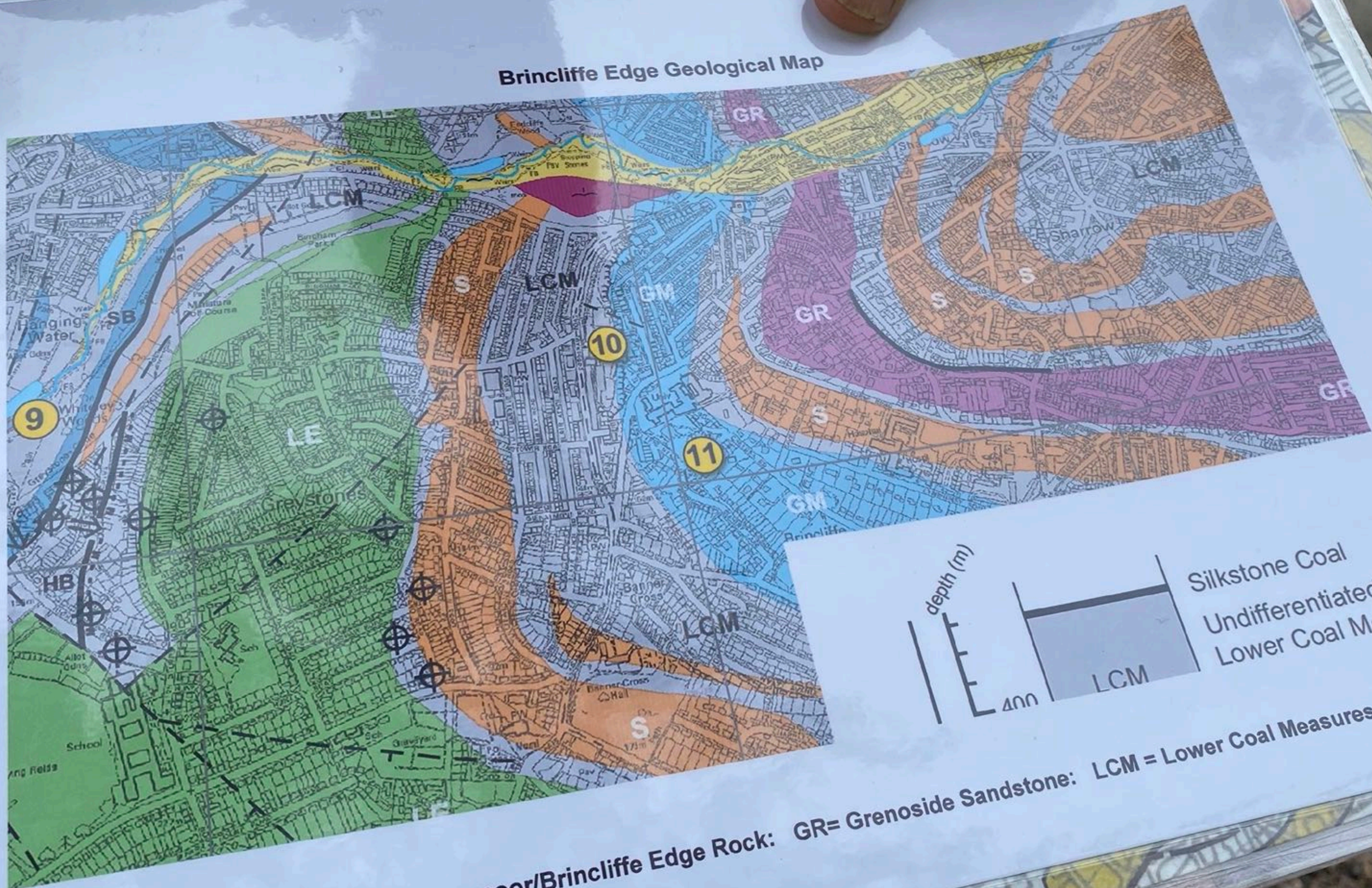
BENJAMIN GREGORY,

DIED APRIL 10TH 1864, AGED 43 YE



Map created using DiGMapGB-625 data 1: 625 000 ESRI® [Bedrock geology]
Reproduced with the permission of the British Geological Survey ©NERC. All rights Reserved

Brincliffe Edge Geological Map



Greenmoor/Brincliffe Edge Rock: GR= Grenoside Sandstone: LCM = Lower Coal Measures in general

ESSELTE



ESRI® [Bedrock geology]
©NERC. All rights Reserved





